



# BARRICK

**GOLDSTRIKE**

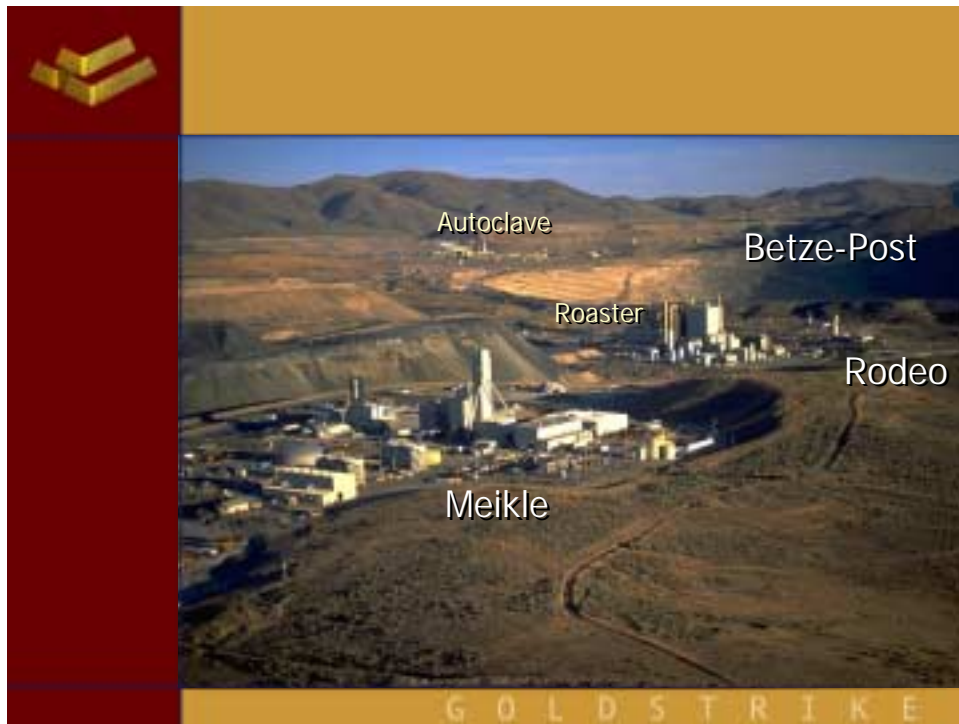
October 7, 2002



## Welcome to Goldstrike



G O L D S T R I K E



A smaller aerial photograph of the Goldstrike processing plant, showing smoke rising from a stack. The slide has a gold and red header with a logo of three stacked gold bars.

## History

- Purchased property in 1986
- Oxide heap-leach operation
- \$62 million viewed as excessive
- Barrick's position:
  - Double the reserves
  - High-grade ore potential
  - Autoclave experience at Mercur



## Contribution to Barrick

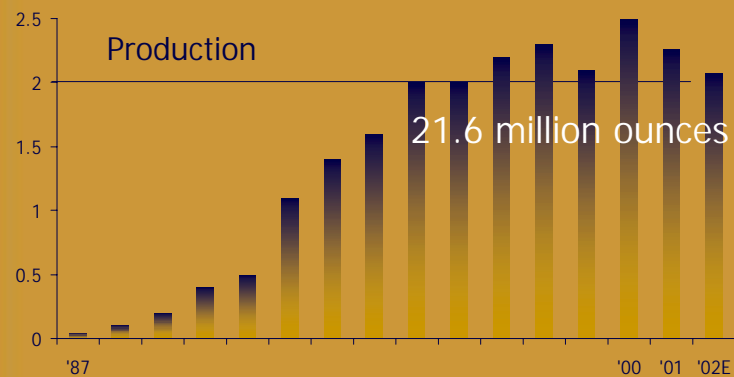
- Employ 1,700 highly trained and skilled mining professionals
- 14,000 direct and indirect jobs
- \$11 million to communities, schools and charities

G O L D S T R I K E



## Reserves and Production

2001 Reserves: 20.4 million ounces

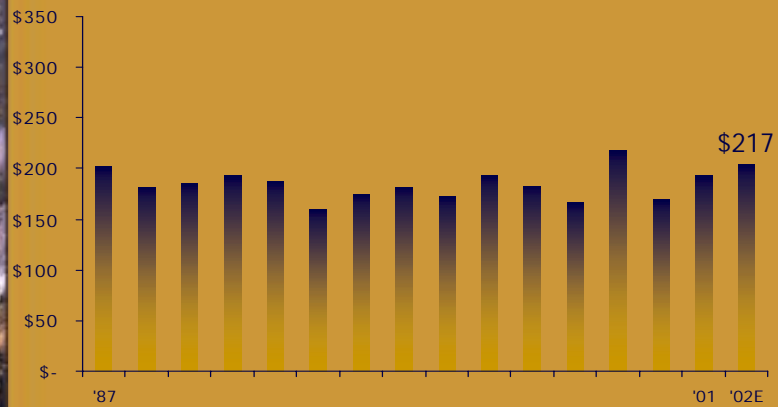


G O L D S T R I K E



## Low Costs

### 2002E Cash Costs per Ounce



G O L D S T R I K E



## Current Status

- Two high grade mines
- World-Class processing facilities
- Solid base of employees

G O L D S T R I K E



## Historical Performance

### Manpower

	1995	1998	1999	2000	2001	% Diff. 98-2001
<b>Surface</b>						
Open Pit	911	846	800	684	629	-26%
Autoclave	386	348	341	340	313	-10%
Roaster		3	75	118	131	
Other	251	249	200	191	200	-20%
Subtotal	1,548	1,446	1,416	1,333	1,273	-12%
<b>Underground</b>						
	66	279	340	468	453	62%
Total	1,614	1,725	1,756	1,801	1,726	0%

G O L D S T R I K E



## Historical Performance

### Production

Tons (000's)	1998	1999	2000	2001	2002E
Open Pit	161,567	155,010	143,205	154,233	146,887
Underground	877	998	1,256	1,372	1,663
Autoclave	6,032	5,798	5,545	5,852	6,382
Roaster	-	-	3,084	4,711	5,757
<b>Ounces (000's)</b>					
Open Pit	1,499	1,130	1,647	1,550	1,389
Underground	847	977	806	713	649
Autoclave	2,346	2,107	1,941	1,726	1,098
Roaster	-	-	512	537	940
Average Head Grade	0.421	0.400	0.320	0.247	0.202

G O L D S T R I K E



## Historical Performance



### Unit Operating Costs

Mining \$/ton mined	1998	1999	2000	2001	2002E
Open Pit	.91	.84	.89	.83	.77
Underground	44.99	39.46	38.12	43.07	48.33
Process \$/ton milled					
Autoclave	20.36	20.31	20.30	19.18	18.18
Roaster	-	-	12.46	13.10	11.76

G O L D S T R I K E



## Historical Performance



### Category of Spend (\$millions)

	1999	2000	2001	2002E	% of Total
Labor	126.0	133.9	141.4	128.2	29.1
Consumables	58.5	68.6	74.9	70.9	16.1
Energy	56.4	75.2	89.9	96.6	21.9
Contract Services	50.0	55.0	51.8	51.4	11.7
Supplies	79.8	81.2	85.8	78.6	17.9
Other Costs	25.1	24.4	29.1	14.6	3.3
Total	395.8	438.3	472.9	440.3	100.0

G O L D S T R I K E



## Historical Performance



### Capital Spending (\$millions)

	1998	1999	2000	2001	2002E
Surface	68	272	117	32	13
Underground	46	21	90	90	35

G O L D S T R I K E



## Outlook



### Increase Reserves and Production

- Improve recovery rates
- Increase throughput
- Continue underground exploration
- District Development Program
  - Use Goldstrike as a hub

G O L D S T R I K E



## Outlook

### Lower Costs

- Open pit
- Underground
- Processing

G O L D S T R I K E



## Outlook

### Cash Flow (millions of dollars)

	2001 <sup>1</sup>	2002E <sup>2</sup>
Revenue	\$823	\$691
Costs	(473)	(440)
Stripping Amortization	146	111
Deferred Stripping	(129)	(103)
Capital	(122)	(48)
<b>Free cash flow</b>	<b>\$245</b>	<b>\$211</b>

<sup>1</sup>100% sold at \$340oz.

<sup>2</sup>50% production at \$365oz.

50% assumed spot gold price at \$275oz.

G O L D S T R I K E



## Reserves and Exploration



G O L D S T R I K E



## Reserves and Exploration



### 2001 Reserves

	Tons (000's)	Grade (oz/ton)	Contained ounces (000's)
Betze-Post	108,854	0.151	16,433
Meikle	8,992	0.439	3,946
Total	117,846		20,379

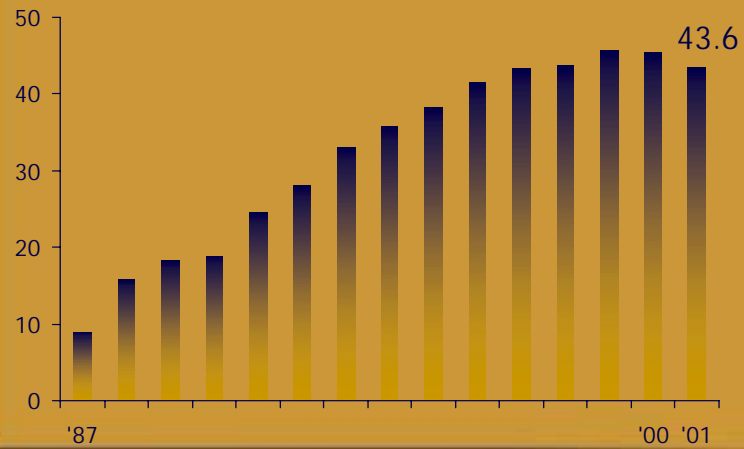
G O L D S T R I K E



## Reserves and Exploration



### Reserve Growth (millions of ounces)



G O L D S T R I K E



## Reserves and Exploration



### District Development Program

- High chance of new discovery
- Rapid development
- Most profitable

G O L D S T R I K E



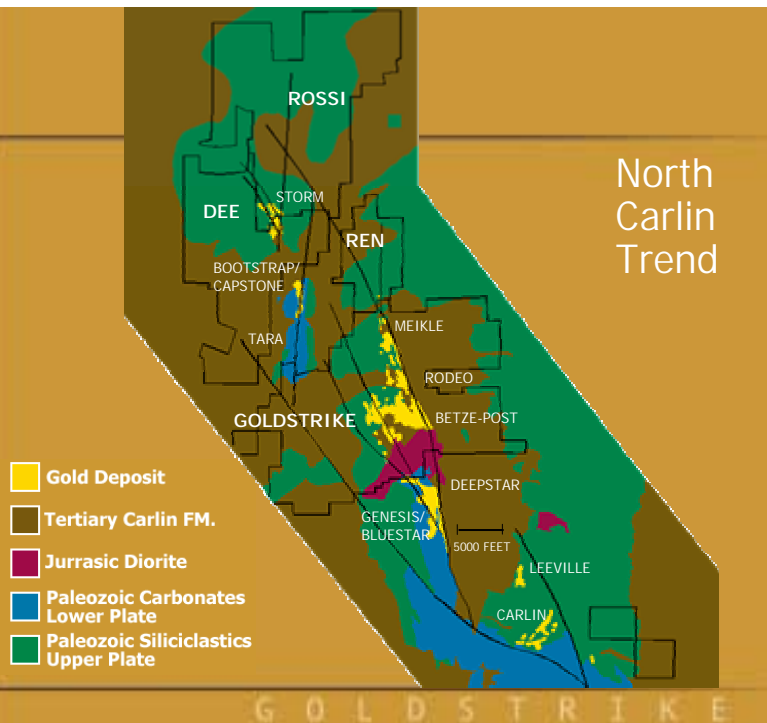
## Reserves and Exploration

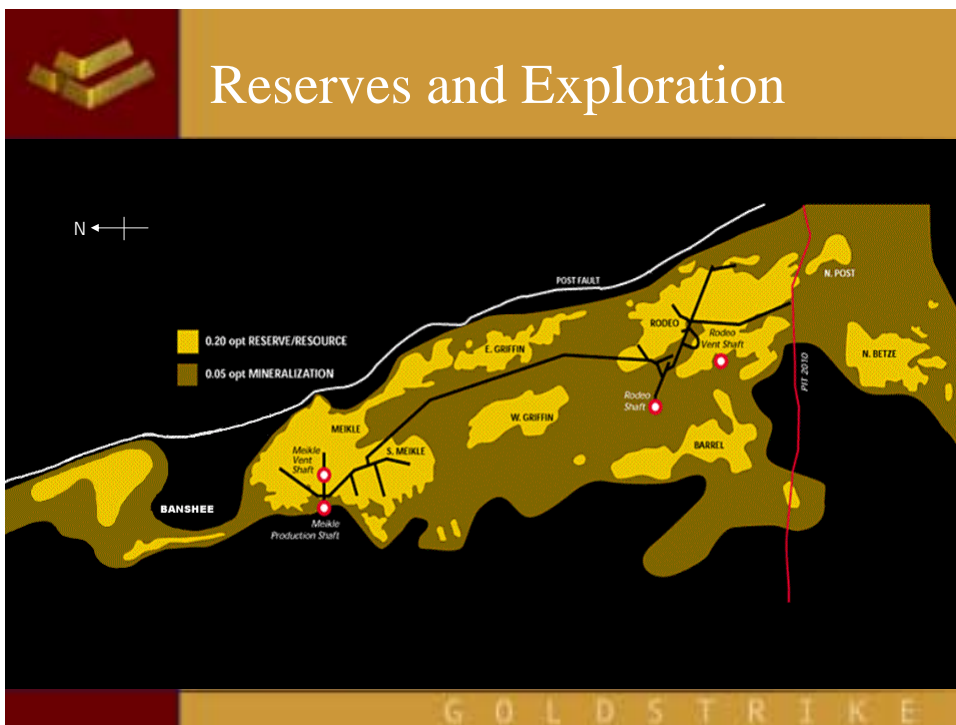


### District Development Program

- Exploration close to known ore bodies and new opportunities within the district
- Acquire adjacent properties
  - Rossi
  - Dee
  - REN

G O L D S T R I K E

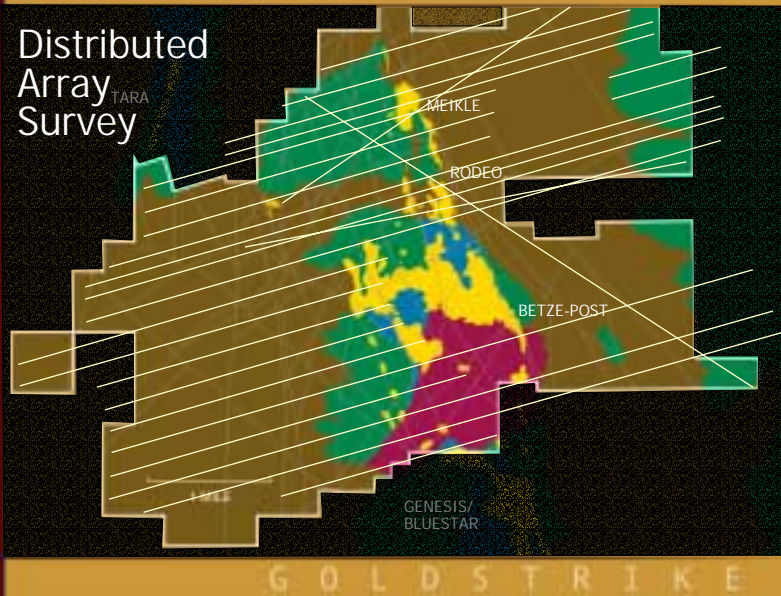






## Reserves and Exploration

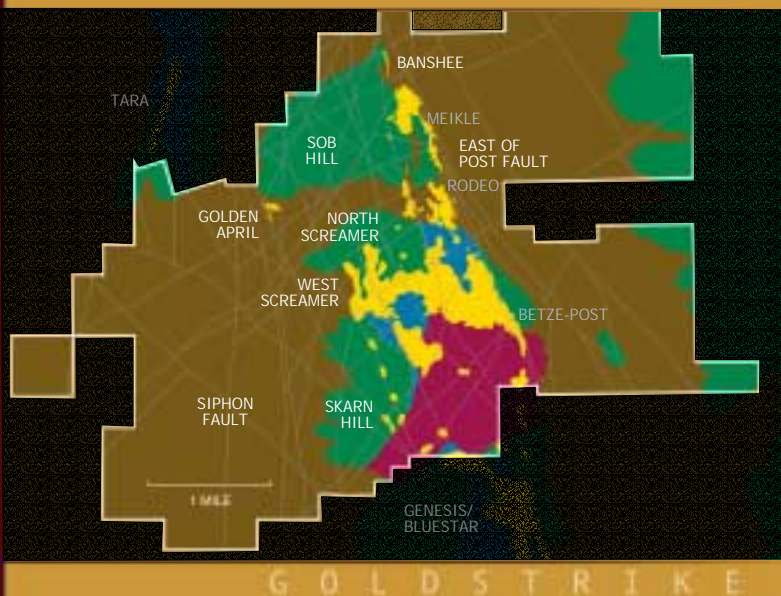
Distributed  
Array  
Survey



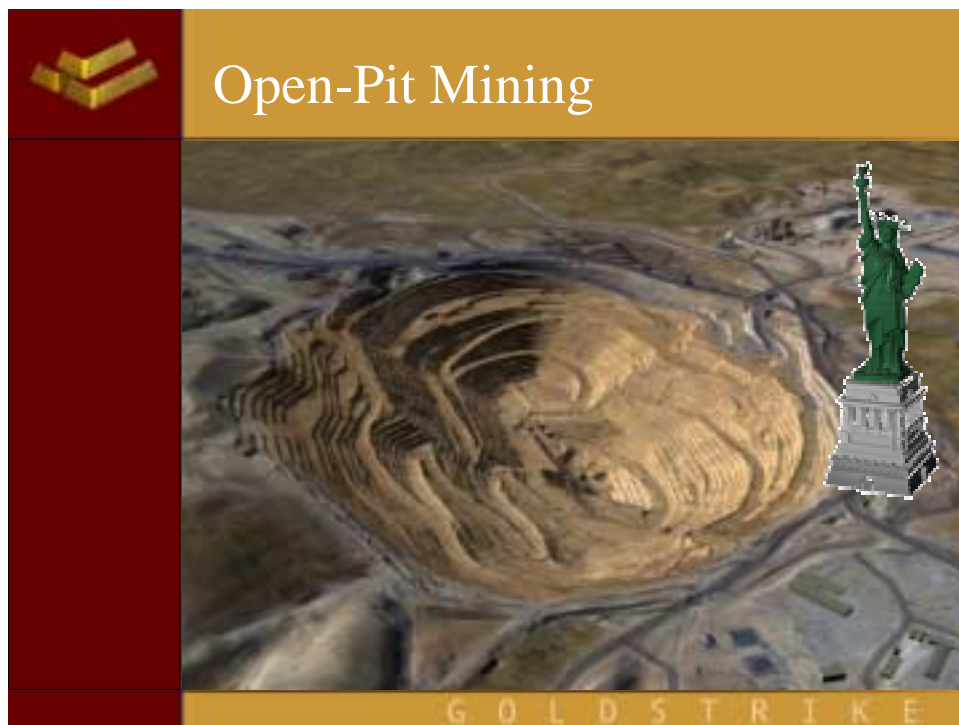
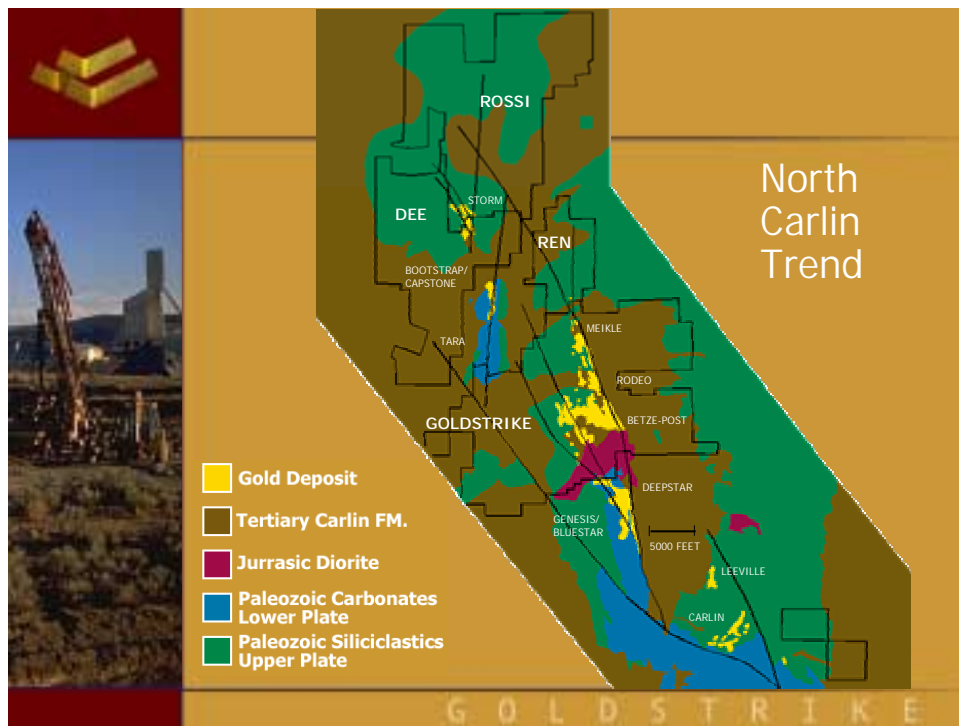
G O L D S T R I K E



## Reserves and Exploration



G O L D S T R I K E





## Open-Pit Mining



G O L D S T R I K E



## Open-Pit Mining

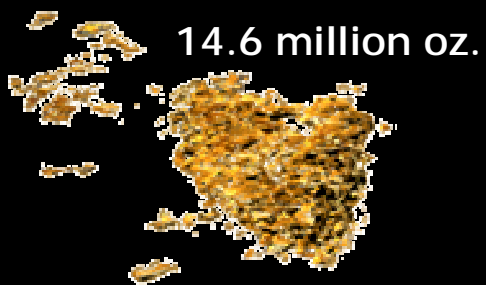


(000's)	1999	2000	2001	2002E
Tons mined	155,010	143,205	154,233	146,887
Tons per day	434	401	433	413
Tons of ore	4,809	11,110	17,412	13,208
Grade oz/ton	0.23	0.21	0.15	0.14
Tons waste	150,201	132,095	136,821	133,679

G O L D S T R I K E



## Open-Pit Mining



G O L D S T R I K E



## Open-Pit Mining



G O L D S T R I K E



## Open-Pit Mining

2 SE – December 2001



G O L D S T R I K E



## Open-Pit Mining

7 W – February 2002



G O L D S T R I K E



## Open-Pit Mining

NE – December 2002



G O L D S T R I K E



## Open-Pit Mining

8 W – December 2004



G O L D S T R I K E



## Open-Pit Mining

9 W – December 2005



G O L D S T R I K E



## Open-Pit Mining

10 W – April 2007



G O L D S T R I K E



## Open-Pit Mining

11 W – October 2008



G O L D S T R I K E

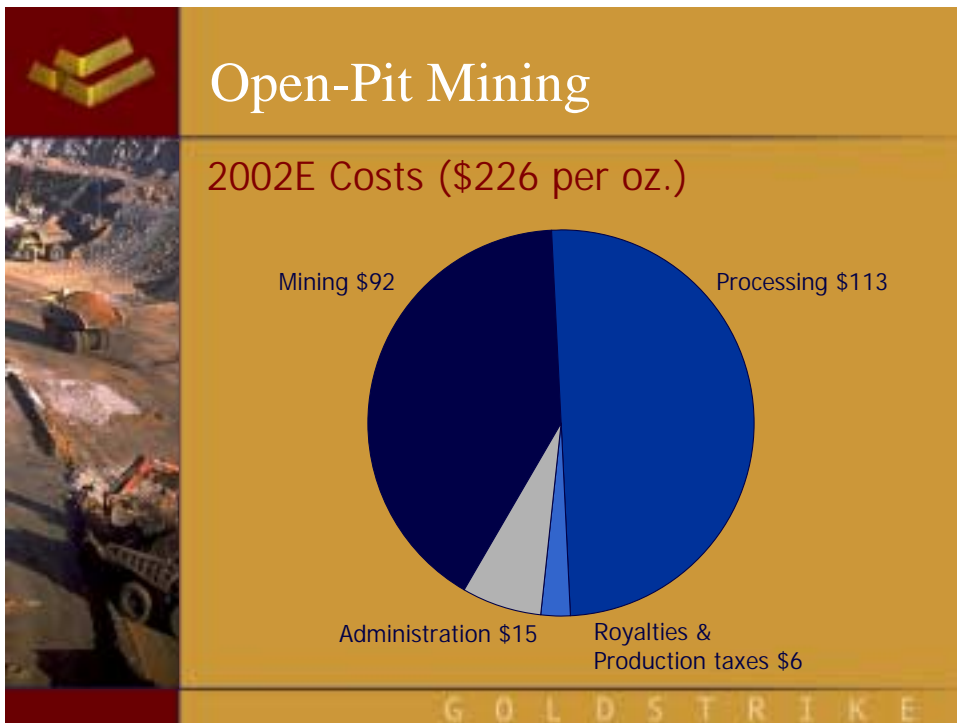
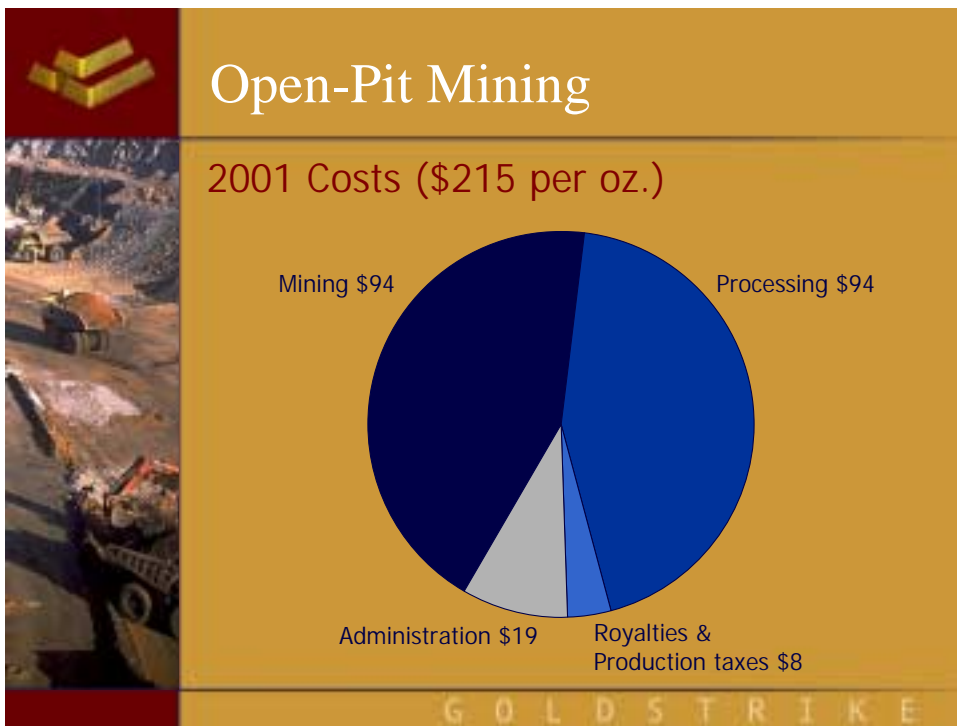


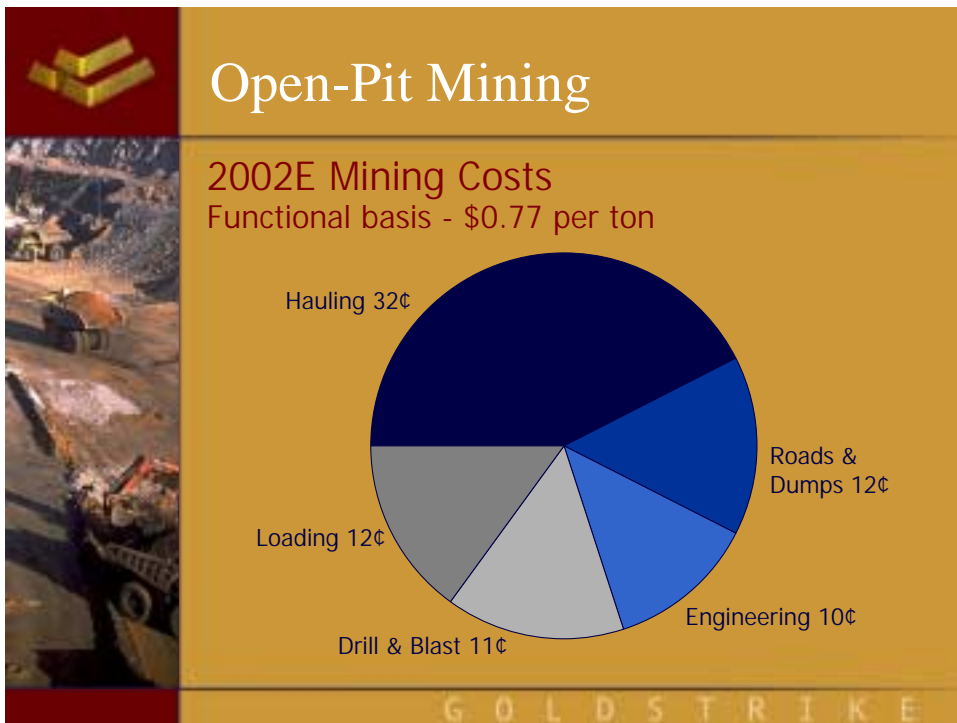
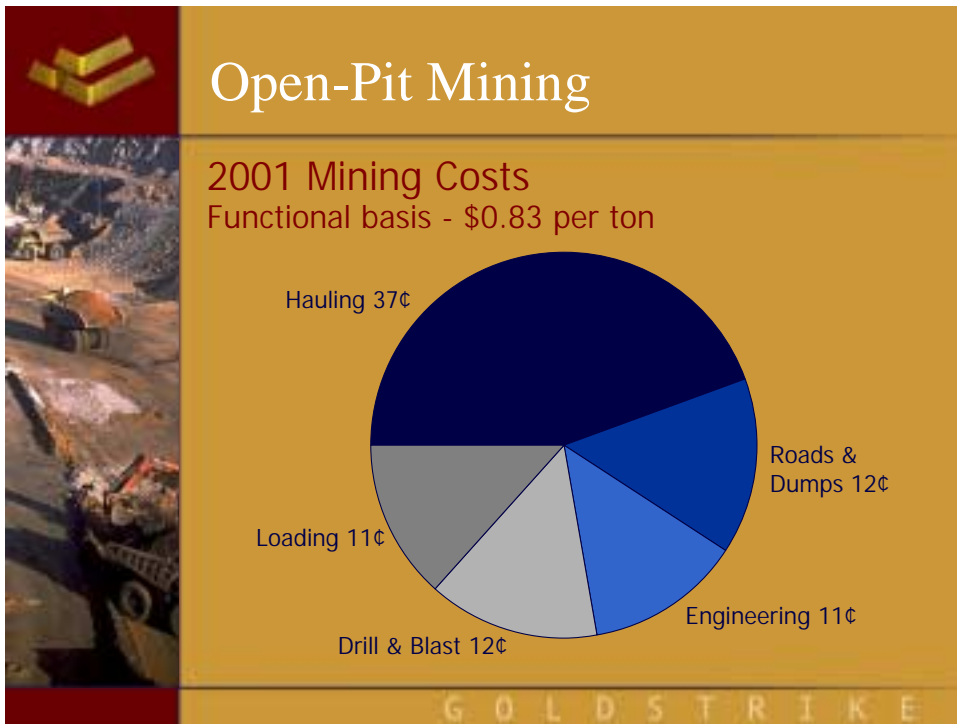
## Open-Pit Mining

12 W – May 2010



G O L D S T R I K E





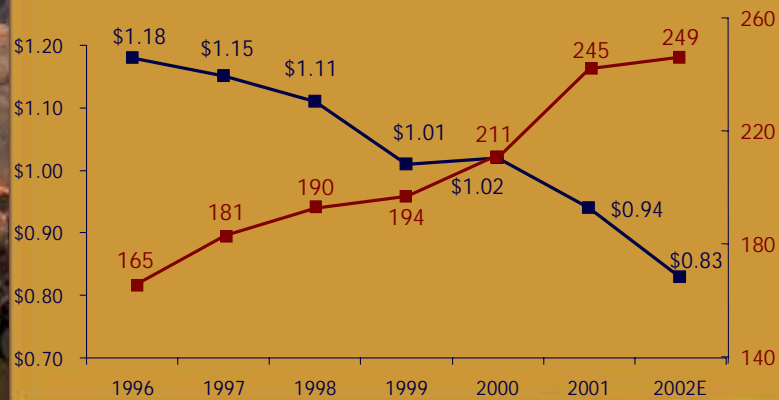


## Open-Pit Mining



### Unit Mining Costs

Tons Mined Per Manshift (thousands)



G O L D S T R I K E



## Open-Pit Mining



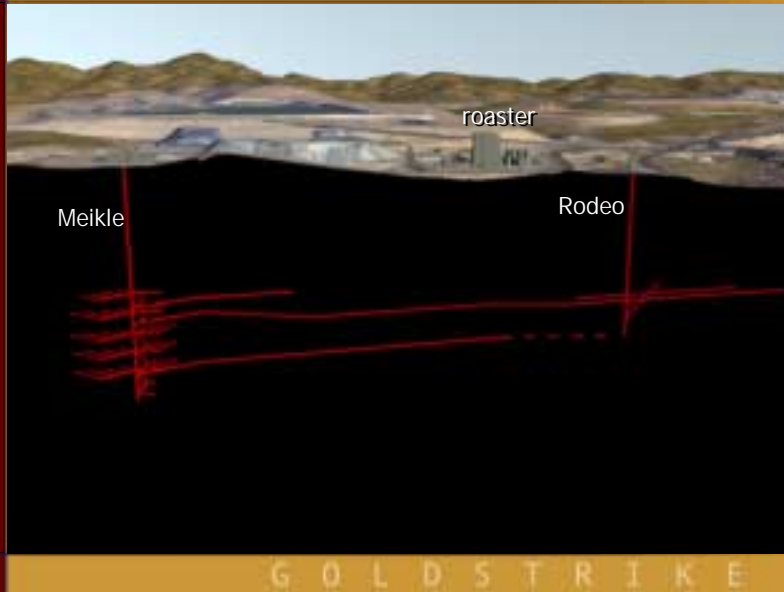
### Reducing costs / Improving productivity

- Increase employee involvement
- Improve approach to maintenance
- Higher utilization of fleet
- Light-weight truck beds
- Larger trucks
- Improve long-term contracts

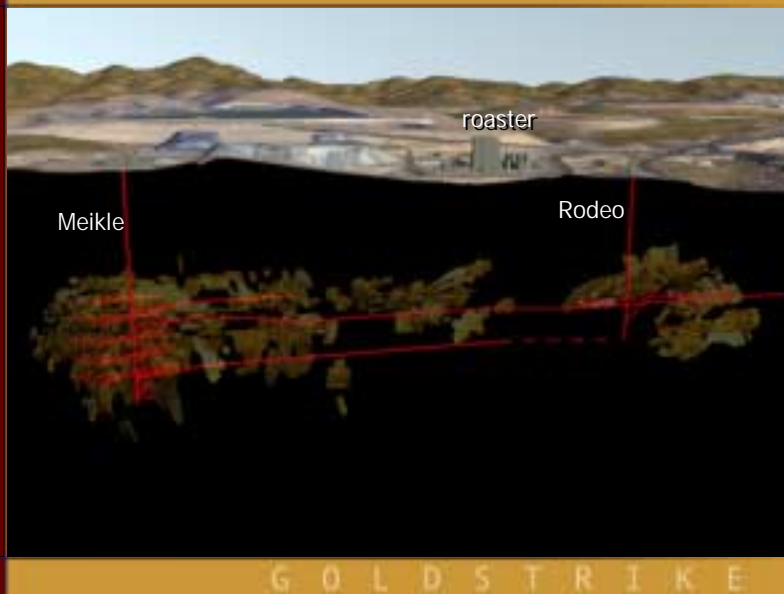
G O L D S T R I K E



## Underground Mining

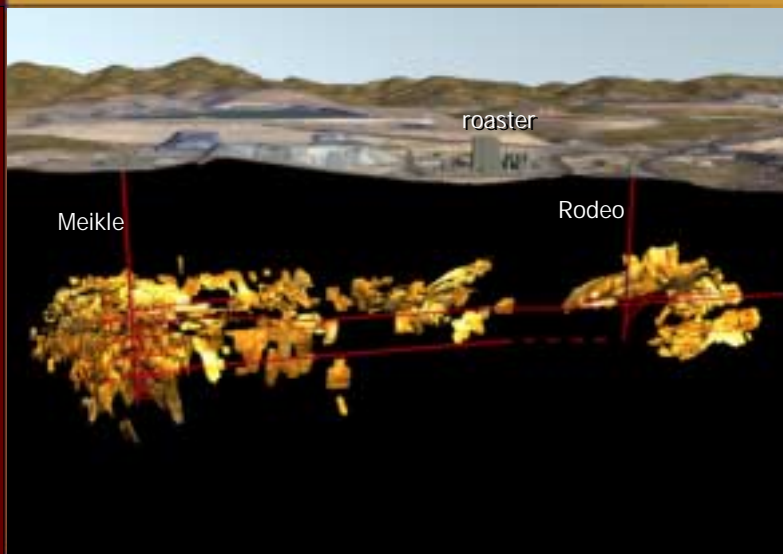


## Underground Mining





## Underground Mining



G O L D S T R I K E



## Underground Mining



	1999	2000	2001	2002E
Tons hoisted	997,785	1,256,602	1,372,431	1,663,413
Tons per day	2,734	3,433	3,770	4,557
Grade oz/ton	1.071	0.724	0.561	0.430

G O L D S T R I K E



## Underground Mining



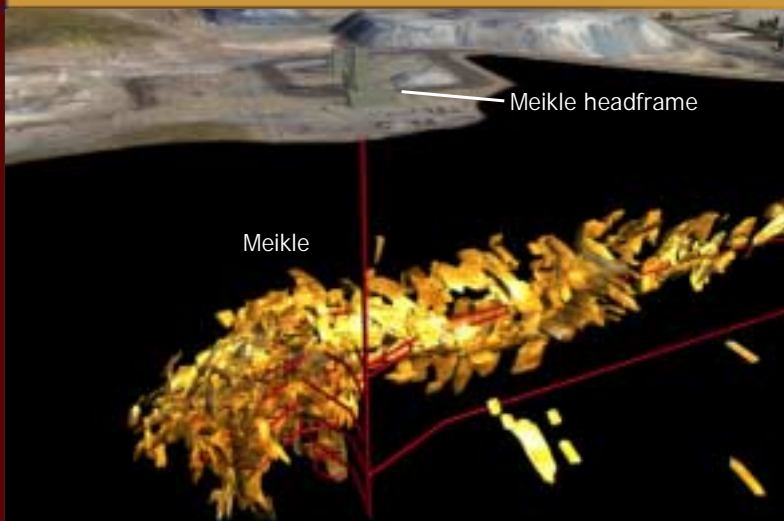
### Rodeo Development

- Initial production – Q4 2001
- 95% open stopes
- 5% cut and fill

G O L D S T R I K E



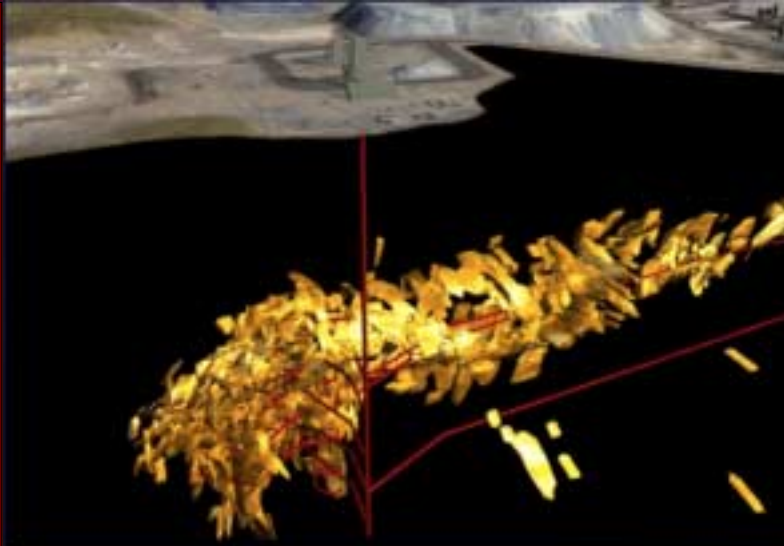
## Underground Mining



G O L D S T R I K E



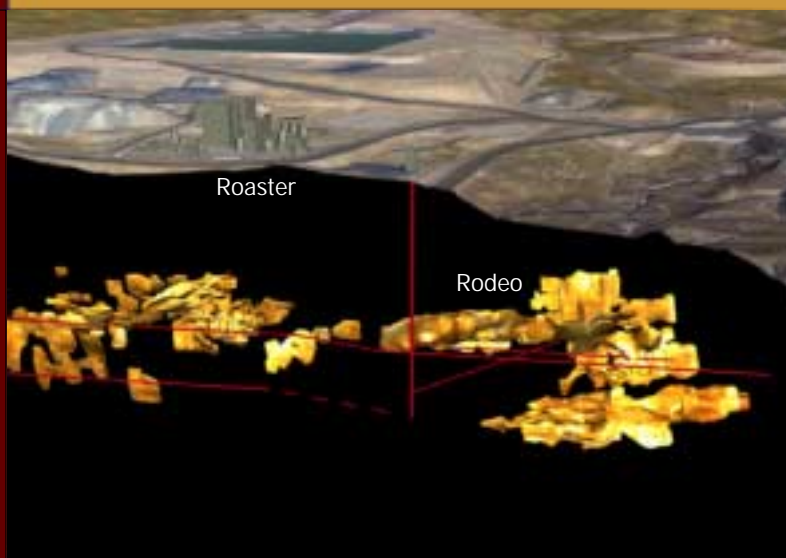
## Underground Mining



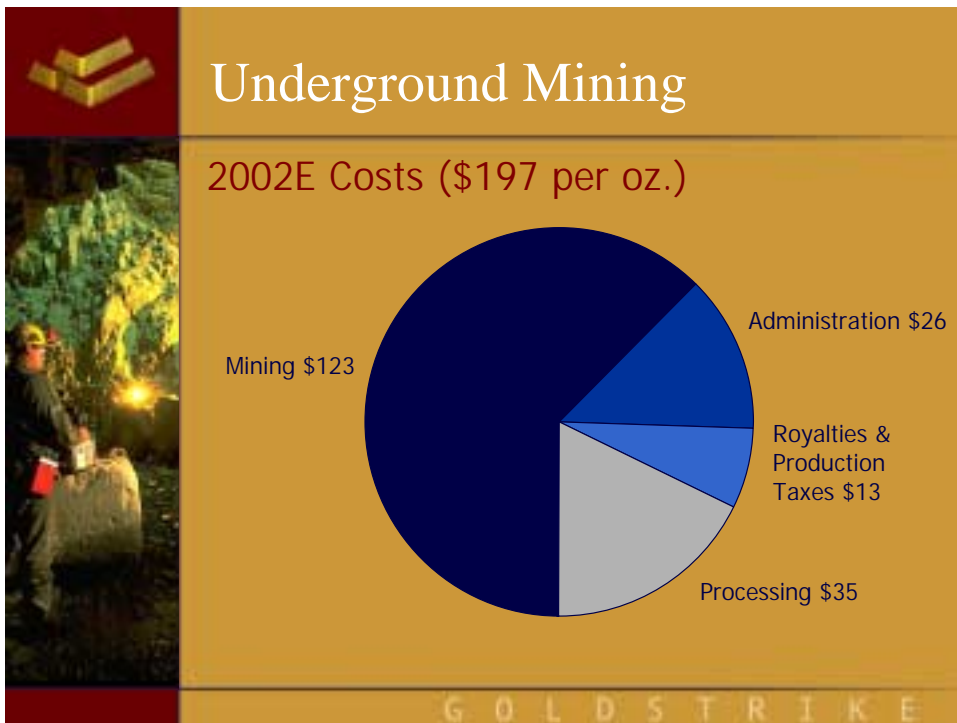
G O L D S T R I K E



## Underground Mining



G O L D S T R I K E



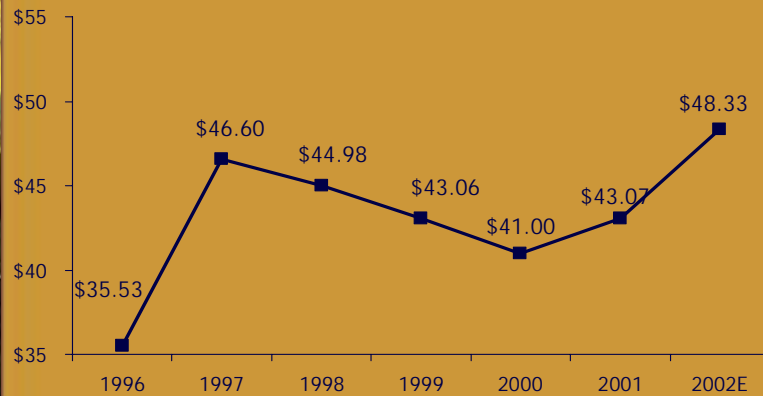




## Underground Mining



### Unit Mining Costs



G O L D S T R I K E



## Underground Mining



### Reducing Costs / Improving Productivity

- Increase employee involvement
- Improve mining methods
  - Mining recovery rates
  - Lower dilution
  - Better utilization of resources
- Improve approach to maintenance

G O L D S T R I K E



## Underground Mining



### 2002 Variances

- Inadequate Planning
  - 2001 Revision to Reserves
  - Revision to development plans
  - Cost Overruns

G O L D S T R I K E



## Underground Mining



### 2002 Variances

- 2001 Revised Reserves
  - More accurate projection of tons & grades
  - First principles mine planning
  - Closer scrutiny of remnant stopes
  - Improved model used in updates & future projections

G O L D S T R I K E



## Underground Mining



### 2002 Variances

- Revision to Development plans
  - Previously did not recognize ground conditions in Meikle Main zone, Extension and South Meikle

G O L D S T R I K E



## Underground Mining



### 2002 Variances

- Revision to Development plans
  - Upside in Rodeo
    - Grade as predicted
    - Faster ramp-up
  - Re-forecasted the rest of the Year
    - Lower tonnage from Meikle Main Zone
    - Continue accelerated mining rate
      - Rodeo
      - Griffin

G O L D S T R I K E



## Underground Mining



### 2002 Variances

- Cost Overruns
  - Much higher cemented fill requirements
  - Higher binder content (9% vs. 5%)
  - Delays in implementing new shotcrete supply contract

G O L D S T R I K E



## Underground Mining



### Improvement Projects

- Productivities
  - Development (\$29.8 MM)
    - Screenless development - First phase of trial completed and successful
    - Second phase to start in October
  - Drift & Fill in South Meikle
    - Introduction of Underhand mining

G O L D S T R I K E



## Underground Mining



### Improvement Projects

#### Backfill Cost Reduction

- Binder (~\$3.8 MM)
  - Renegotiated Cement contract September 02
  - Possible alternate Fly ash suppliers
  - Change in mix from 60:40 to 50:50
  - Reduction in overall binder content
- Aggregate (~\$2.6 MM)
  - Cheaper aggregate in place since March 02
  - Improved mix (more fines) since August 02
    - Possible additional reduction in binder requirements

G O L D S T R I K E



## Underground Mining



### Approach for 2003

- Targeting higher dependability in plan
- Developing greater flexibility
- Operating consequences
  - Much lower production rate from Meikle Main Zone
  - Other Meikle mining areas scheduled at YTD performance
  - All three (3) mining zones at Rodeo in production

G O L D S T R I K E



## Processing

### 2001 Reserves by Process

Betze-Post*	Tonnage	OPT**	Ounces
Autoclave	27,549	0.209	5,760
Roaster	45,433	0.151	6,680
Stockpiles	35,872	0.105	3,777
<b>Sub-Total</b>	<b>108,854</b>	<b>0.151</b>	<b>16,433</b>
<b>Underground Division</b>			
Autoclave	2,251	0.507	1,141
Roaster	6,740	0.416	2,804
<b>Sub-Total</b>	<b>8,991</b>	<b>0.439</b>	<b>3,945</b>
<b>Total</b>	<b>117,845</b>	<b>0.173</b>	<b>20,378</b>

\* WIP included in Roaster reserves

\*\* Ounces Per Ton

G O L D S T R I K E



## Processing

### 2001 Processing Costs Functional basis

\$ per ton	Autoclave	Roaster
Autoclaving / Roasting	12.82	4.03
Crushing / Grinding	2.95	5.02
C.I.L. / Tailing	3.41	4.05
	<b>\$19.18</b>	<b>\$13.10</b>
<b>Average</b>	<b>\$16.47</b>	

G O L D S T R I K E



## Processing

### 2002E Processing Costs Functional basis

<u>\$ per ton</u>	<u>Autoclave</u>	<u>Roaster</u>
Autoclaving / Roasting	12.10	3.80
Crushing / Grinding	2.79	4.38
C.I.L. / Tailing	3.29	3.58
	\$18.18	\$11.76
Average	\$15.13	

G O L D S T R I K E



## Processing

### 2002 Estimated Throughput

<u>Tons per Day</u>	<u>Autoclave</u>	<u>Roaster</u>	<u>Total</u>
Betze-Post	15,993	12,082	28,075
Custom Ore	9	639	648
Meikle	1,482	3,050	4,532
Total	17,484	15,771	33,255

G O L D S T R I K E



## Processing



### Reducing Costs / Improving Productivity

- Employee involvement in CI initiatives and safety programs
- Synergies with roaster/autoclaves and continued focus on recovery improvements in both areas
- Throughput CI initiatives at both autoclave and roaster facilities
- Optimize reagent consumption
- Purchasing initiatives in reagent unit prices

G O L D S T R I K E



G O L D S T R I K E



## Forward Looking Statement

Certain statements included herein, including those regarding production, costs and earnings, constitute "forward looking statements" within the meaning of the United States Private Securities Litigation Reform Act of 1995. Such Forward-looking statements involve known and unknown risks, uncertainties and other factors that may cause the actual results, performance or achievements of Barrick or of the gold mining industry to be materially different from future results, performance of achievements expressed or implied by those forward looking statements. Barrick is subject to the effects of changes in the worldwide price of gold and the risks involved in mining operations. These factors are discussed in greater detail in Barrick's most recent Annual Information Form and Management's Discussion and Analysis on file with the U.S. Securities and Exchange Commission and Canadian provincial securities regulatory authorities.

G O L D S T R I K E